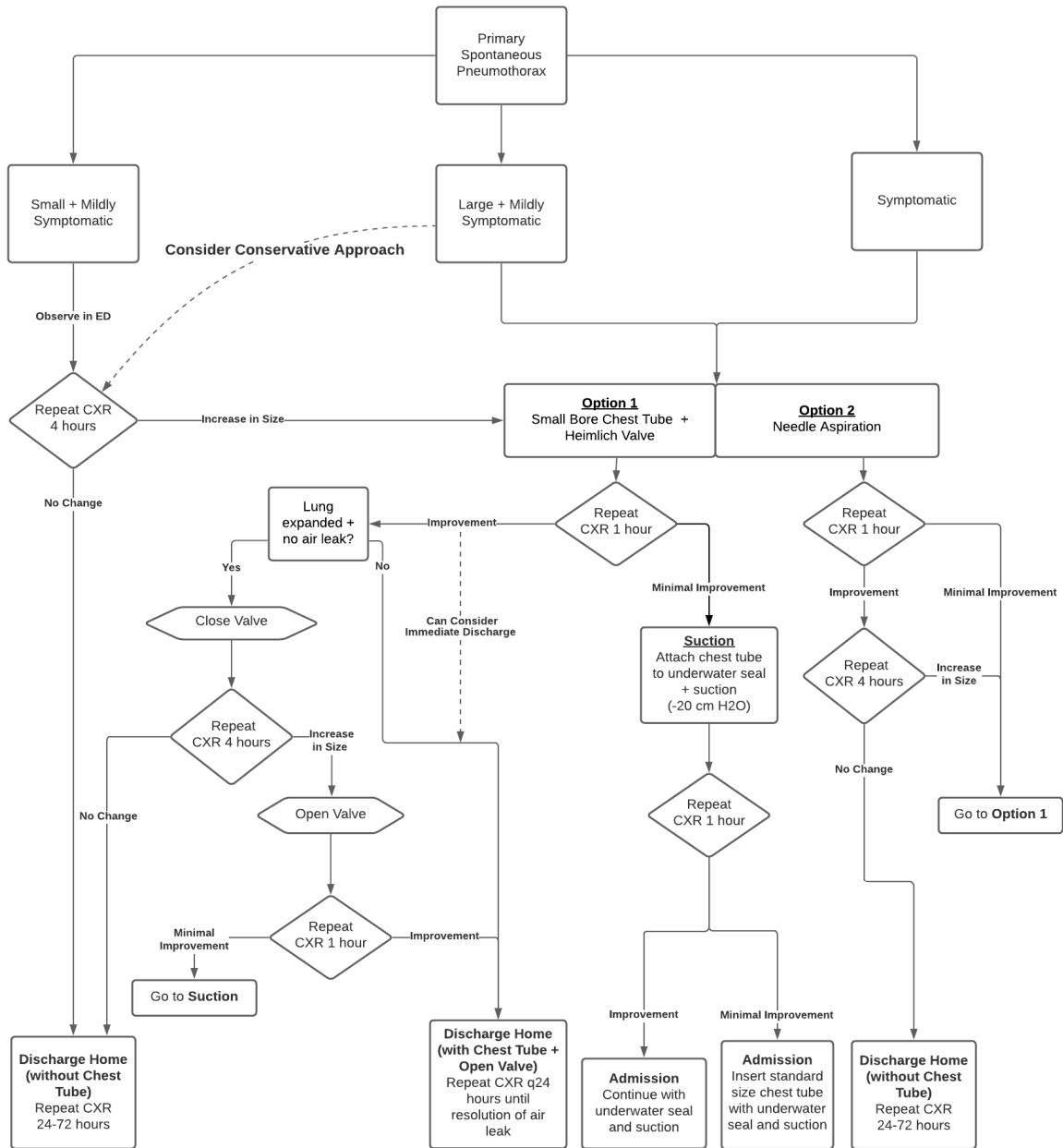


Appendix 1 - Algorithm for ED Management of PSP



Large Pneumothorax:

Any of the following definitions are acceptable:

- Apex-cupola distance > 3cm
- Interpleural distance at hilum > 2cm
- Light Index estimation > 20%
- Dehiscence over entire length of lateral chest wall
- Collins method estimation > 32% (A+B+C >= 6cm)

Consider Conservative Approach:

- Age <50; PSP
- **Mildly Symptomatic:** Pain controlled, Able to mobilize, Vital Signs within normal limits
- Reliable and able to return if worsening symptoms
- No planned air travel

SSP or Unstable: Consider chest tube and admission